



St. Bernard School

# Crusader Challenge 2024

Winning TASTES so Sweet!!!



October 16, 2024

Dear St. Bernard School Parents,

On *Friday, November 22, 2024*, St. Bernard School will hold its 6th Annual Crusader Challenge with a goal to raise \$65,000. In the past, this event has funded various campus improvements and curriculum enrichment materials and supplies. The next step in our facilities long range plan is to build a new dynamic playground in the center of our campus. Last year, we were able to raise funds to begin the NEW Playground Project. Our goal this year is to fully fund the Playground Project by combining this year's funds with the funds raised last year. Any Crusader Challenge financial support will help get us closer to our goal.

Students will walk or jog around the Crusader Circle as many times as possible in a set time period. Each student will raise funds by asking sponsors to contribute a tax deductible donation to St. Bernard School. Here are the details.

## Your Support

Once again, we will be using an awesome web based fundraising system for our Crusader Challenge. This website will make it **much easier** for you to request pledges from your family and friends, and for them to make secure credit card donations online. It's fun, it's easy, and people who use it typically raise twice as much as those who don't! **Each family will set up one account for all students in the family.**

Remember, our Crusader Challenge is November 22, so please follow the directions on the enclosed flyer to **register now** to help our school raise as much as we can. **In order for donations to count towards a student's incentives, donations must be turned in by Friday, November 15, 2024 at 3 pm. Any donations turned in after this time will not be put towards a student's incentives.**

## Mail-In Donations

If you prefer, donors can send a check made payable to **St. Bernard School** with the student's name in the memo section. Donations should be mailed to: **St. Bernard School, 251 East Bridge Street, Breaux Bridge, LA 70517, ATTENTION: Crusader Challenge.**

If you have any questions about the Crusader Challenge, please feel free to contact Heather Cambre, Fundraiser Chairman at [crusaderchallenge@sbscrusaders.com](mailto:crusaderchallenge@sbscrusaders.com) or (337) 281-5728. If we meet or exceed our goal of \$65,000, we will be able to construct a NEW dynamic playground for all of our students to enjoy for years to come. So, let's start the **Race** by collecting donations!

Sincerely,

JP Masterson, Principal

Heather Cambre, Lauren Berard, Fallon Guidry, Kara Hebert, Claire Broussard, Lori Gauthier, and Jan Tumlin - The Crusader Challenge Committee



St. Bernard School

# Crusader Challenge 2024

Winning TASTES so Sweet!!!



## SETTING UP YOUR FAMILY'S CRUSADER CHALLENGE DONATION PAGE

For our Crusader Challenge this year, we're using an awesome web based fundraising system that makes it **much easier** for you to request pledges from your family and friends, and for them to make secure credit card donations online. It's fun, it's easy, and people who use it typically raise twice as much as those who don't!

**Each family will set up ONE account for all students in the family.** Please just share the login between parents or anyone who may need to login to monitor donations.

Remember, our Crusader Challenge is November 22, so please **register now** to help our school raise as much as we can for the **NEW Playground Project!**

Scan the QR Code to register and get started.



St. Bernard School  
Crusader Challenge

Using your computer or phone's browser:

- Go to <http://pledgestar.com/crusaderchallenge>
- Click "Not Registered For This Year's Event"
- Enter your name and email address, then click "Submit"
- Follow the instructions on-screen to register Challenger(s) and add family and friends

When you finish, the system emails pledge requests to your family and friends, and allows them to make secure credit card donations online. You get notified each time a pledge is made, and you can track your pledge progress online.

Call 1-888-598-7510 if you need help.



St. Bernard School

# Crusader Challenge 2024

Winning TASTES so Sweet!!!



## IMPORTANT DATES

### Wednesday, October 16, 2024:

Crusader Challenge Papers go home  
Parents can begin setting up PLEDGESTAR ACCOUNTS

### Monday, October 21, 2024:

Official fundraiser kick off!

### Friday, October 25, 2024:

Additional T-Shirt Order Forms Due - ***This does not apply to the students!!!  
They will automatically receive a T-Shirt based on sizes entered in  
RENWEB.***

***Final Day*** for ALL Sponsorship Commitments!

### November 1, 2024:

Sponsorship money is due!

### Friday, November 15, 2024:

***Incentive donations deadline*** - donations made after this date **will not** be counted towards students incentive level.

### Friday, November 22, 2024:

RACE DAY!!!!!!



St. Bernard School

# Crusader Challenge 2024

Winning TASTES so Sweet!!!



## Crusader Challenge Additional T-Shirts

Every student receives a **FREE** 2024 Crusader Challenge t-shirt. If you would like to order **EXTRA** Crusader Challenge shirts, please fill out the form below before **October 25, 2024**. Additional t-shirts are available for purchase for \$16.00 each, with an Adult 2XL \$18.00 each. We will charge your RenWeb account for additional shirts. Please do not send money to school for Crusader Challenge shirts.

Use the following QR Code to order additional Crusader Challenge Shirts



**To access this packet and more information for this year's Crusader Challenge, please use the following link or email**

**[CrusaderChallenge@sbscrusaders.com](mailto:CrusaderChallenge@sbscrusaders.com)**





St. Bernard School

# Crusader Challenge 2024

Winning TASTES so Sweet!!!



## Prize & Award Categories

- Students who receive the following donation amounts will get the following:
  - \$25 in donations: Jesus is So Sweet Stress Ball**
  - \$50 in donations: the above plus Pajama Day**
  - \$75 in donations: the above plus Kona Ice Treat**
  - \$100 in donation: the above plus Pizza Party**
- Grade Band Prizes as follows:
  - Pre-K & K: Inflatable Castle Jumper with slide**
  - 1st & 2nd: Inflatable Water Slide**
  - 3rd, 4th & 5th: \$200 Nike Gift Card**
  - 6th, 7th & 8th: Large Bean Bag Chair**
- The class who *raises the most money* will have a Chick-fil-A Party in their classroom.
- The *teacher* with the class which raises the most money will receive a Gift Card towards classroom supplies AND a Gift Card to Cafe Sydnie Mae.
- A first place trophy will be awarded to the boy and girl in each grade level who completes the most laps during the Race for Education. A Crusader Challenge Finisher Medal will be given to all the students on Race Day.
- If we reach our goal of **\$65,000**, Mr. Masterson will be given a **SWEET** Surprise and everyone will enjoy a FREE DRESS Day! *\*Date of free dress day will be determined after the race!*
- **All participants** of the Sader Showdown will get to give Mr. Masterson a “SWEET Surprise” in the Award Show Finale. The **first place winner** of the Sader Showdown will receive an Amazon Gift Card and a trophy for bragging rights.
- The student who raises the most money will be allowed to have a “Cookie Cake Decorating Party” on the bayou with a friend and a special lunch provided by the race committee.
- *Weekly challenges* will be announced each Monday morning. The *Homeroom class* to win the challenge will receive a mystery prize.
- **NEW** this year, each family that raises \$300 or more will be entered into a drawing that will take place during the award ceremony for a FAMILY Fun Pack!!!



St. Bernard School

# Crusader Challenge 2024

Winning TASTES so Sweet!!!



## FREQUENTLY ASKED QUESTIONS

### What is the Crusader Challenge?

The Crusader Challenge is a fundraiser where friends and family are donating whatever amount they choose in support of the student participating in a challenge, in our case, a race course. Donations are not determined by how fast the student completes the race or how many laps the student completes, but instead are fixed. The race is a fun way for all students to participate at a level they feel comfortable and fundraise for school/campus improvements. There are prize incentives to encourage friendly competition among the individual students and also between classes.

### Why are we doing this school fundraiser?

The funds generated from the Crusader Challenge will be put towards campus improvements, such as future gym renovations and upgraded playground equipment, and continued curriculum development. *The funds raised this year will go towards the funding of the **NEW Playground Project!*** Construction for the new playground will begin this fall and is anticipated to be completed in the Spring of 2025.

### Who can participate?

All students will participate in the Crusader Challenge.

### How do you donate?

Once again this year, we are using an awesome web based fundraising system that makes it **much easier** for you to request pledges from your family and friends, and for them to make secure credit card donations online. It's fun, it's easy, and people who use it typically raise twice as much as those who don't! Each family will create their own page using the instructions sent home on **Wednesday, October 16, 2024**. If you prefer, you send a check made out to St. Bernard School with the sponsored Student's Name in the memo: **Crusader Challenge, St. Bernard School, 251 East Bridge Street, Breaux Bridge, LA 70517**.

## **When will donations begin to be accepted?**

Donations can be made beginning Wednesday, October 16, 2024.

## **What is the deadline for donations?**

Donations can be accepted all year long. However, in order for donations to count towards a student's incentive level, donations must be turned in by Friday, November 15, 2024 at 3 pm. Any donations turned in after this time will not be put towards a student's incentives.

## **How can I become a corporate sponsor of the Crusader Challenge?**

For information on becoming a sponsor of the Crusader Challenge, please contact Heather Cambre, Fundraising Chair at (337) 281-5728 or [crusaderchllenge@sbscrusaders.com](mailto:crusaderchllenge@sbscrusaders.com). Deadline for all sponsorship commitments must be made by Friday, October 25, 2024.

## **What are the students expected to do on race day?**

On race day, students will walk, jog or run around the Crusader Circle, a designated area, as many times as possible during a set amount of time.

## **What is the schedule of events?**

A schedule of events will be shared at a later date.

## **What if there is a chance of rain?**

The committee will keep a close eye on the forecast the week of the race. If there is a chance of rain that seems like it will affect the race, the event will be moved up to Wednesday, November 20, 2024. Parents will be notified of the change.

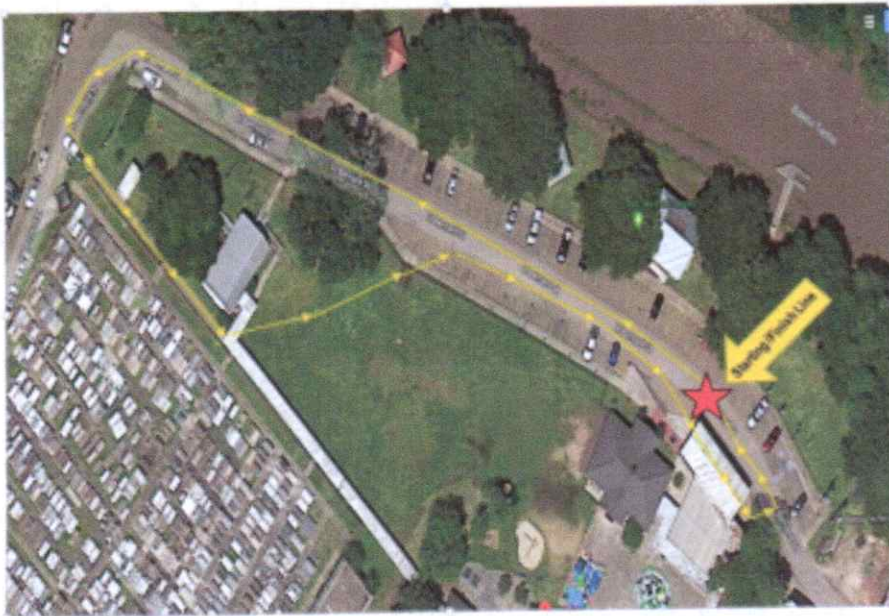
## **Is there a theme for the event?**

The theme for this year's Crusader Challenge is "Winning TASTES So Sweet". More details to come.

## **What is the Sader Showdown?**

The Sader Showdown is a competition between 5<sup>th</sup>, 6<sup>th</sup>, 7<sup>th</sup> and 8<sup>th</sup> grade students who raise a minimum of \$200 in donations. These students compete through the race course with an added military style obstacle course. Each student is allowed one lap through the course. The Student with the fastest time will win.

**What is the race course?**



**Who do I contact if I have more questions?**

Heather Cambre, Fundraiser Chair  
[crusaderchallenge@sbscrusaders.com](mailto:crusaderchallenge@sbscrusaders.com)  
(337) 281-5728